

# BIONICLE

RAHKSHI

*STARS*

7138

[www.BIONICLE.com](http://www.BIONICLE.com)

LEGO



**STARS**



7116



7137



7136



7117

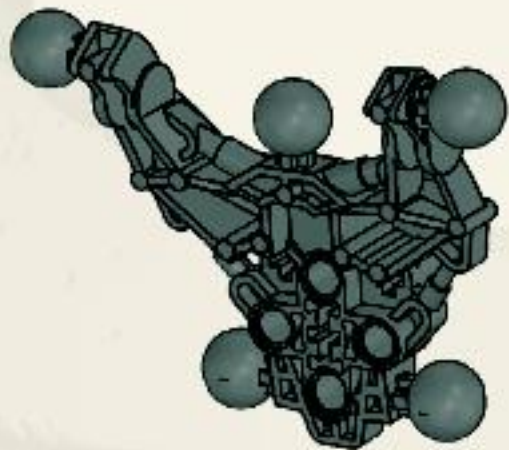


7138

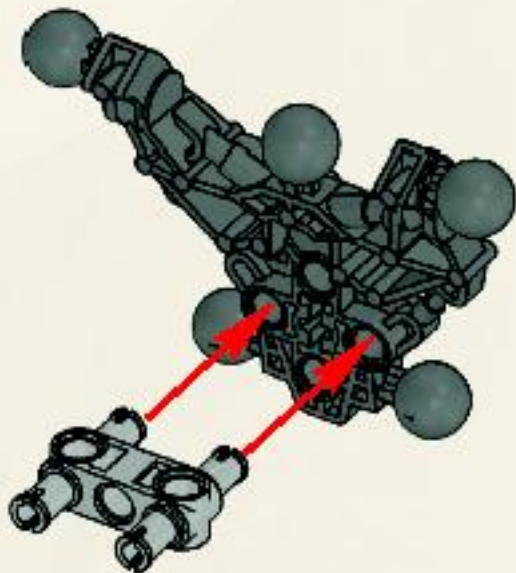


7135

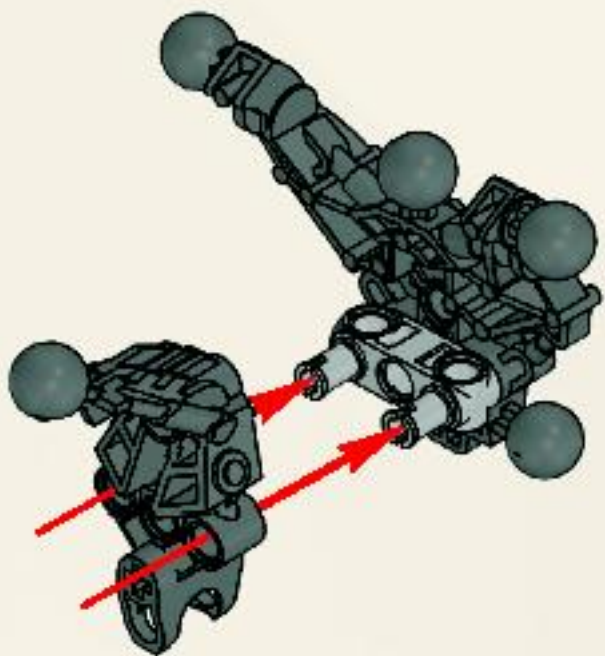
1



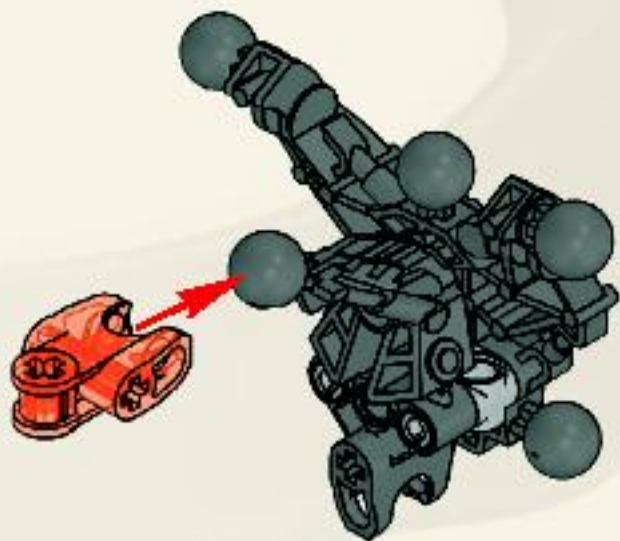
2

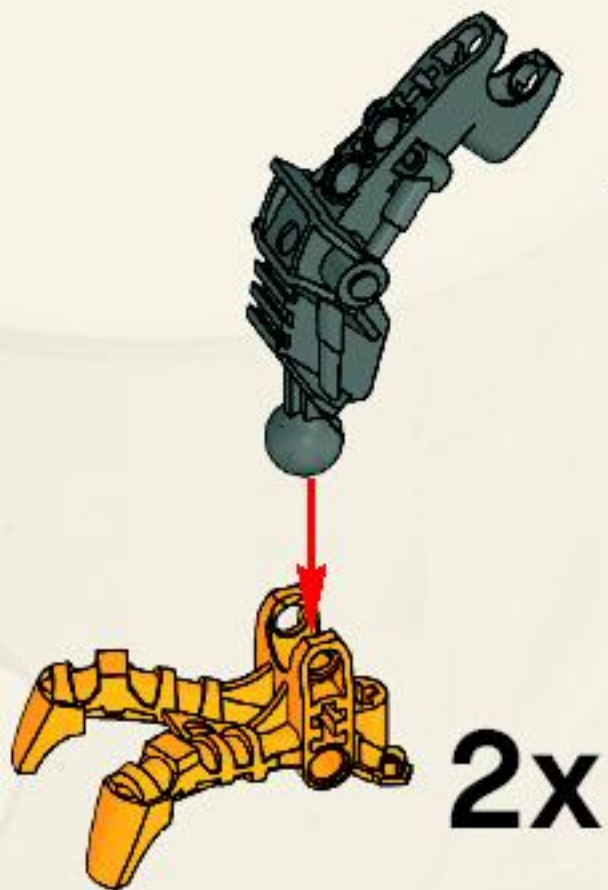


3

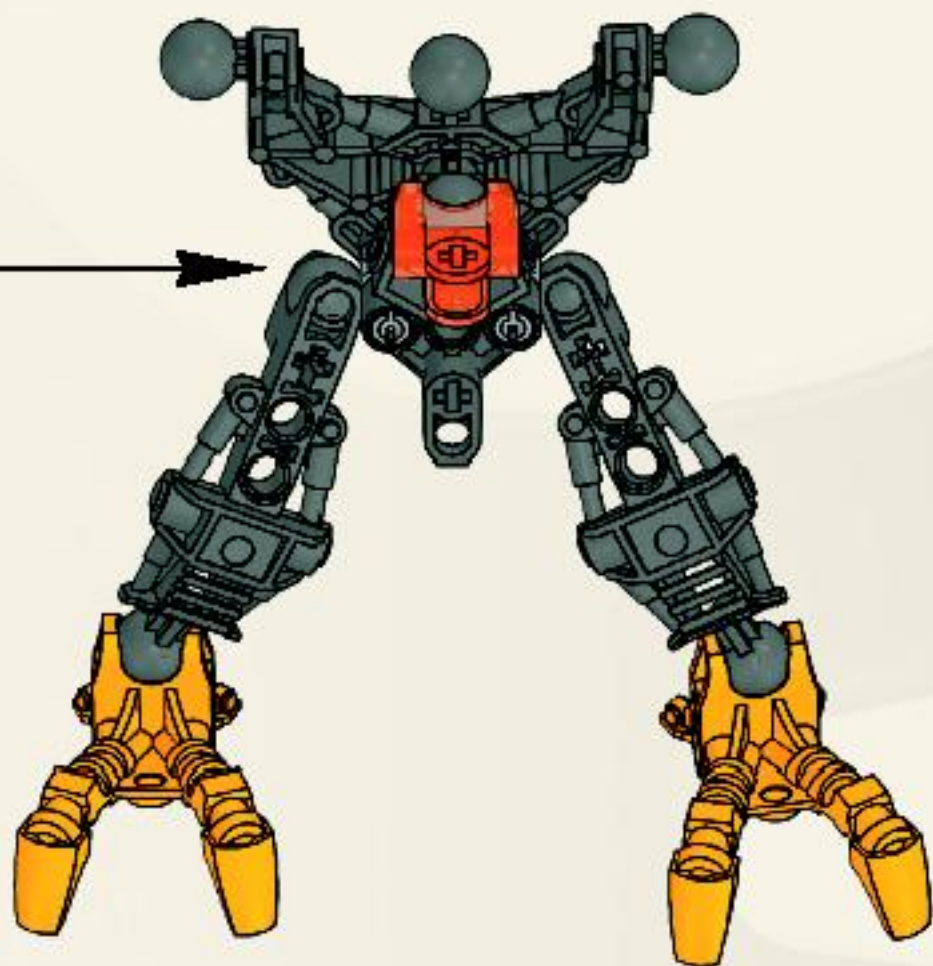


4

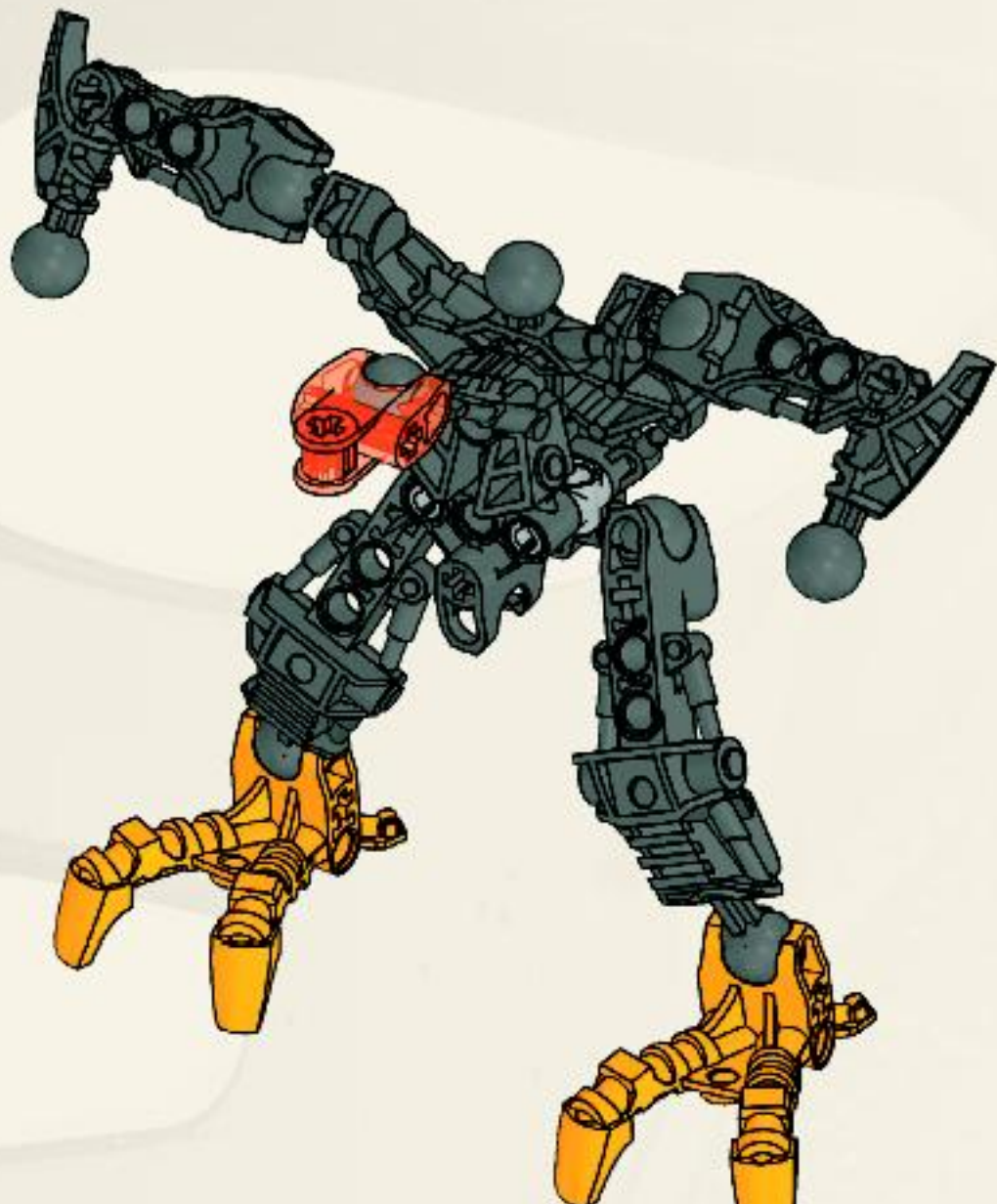




5

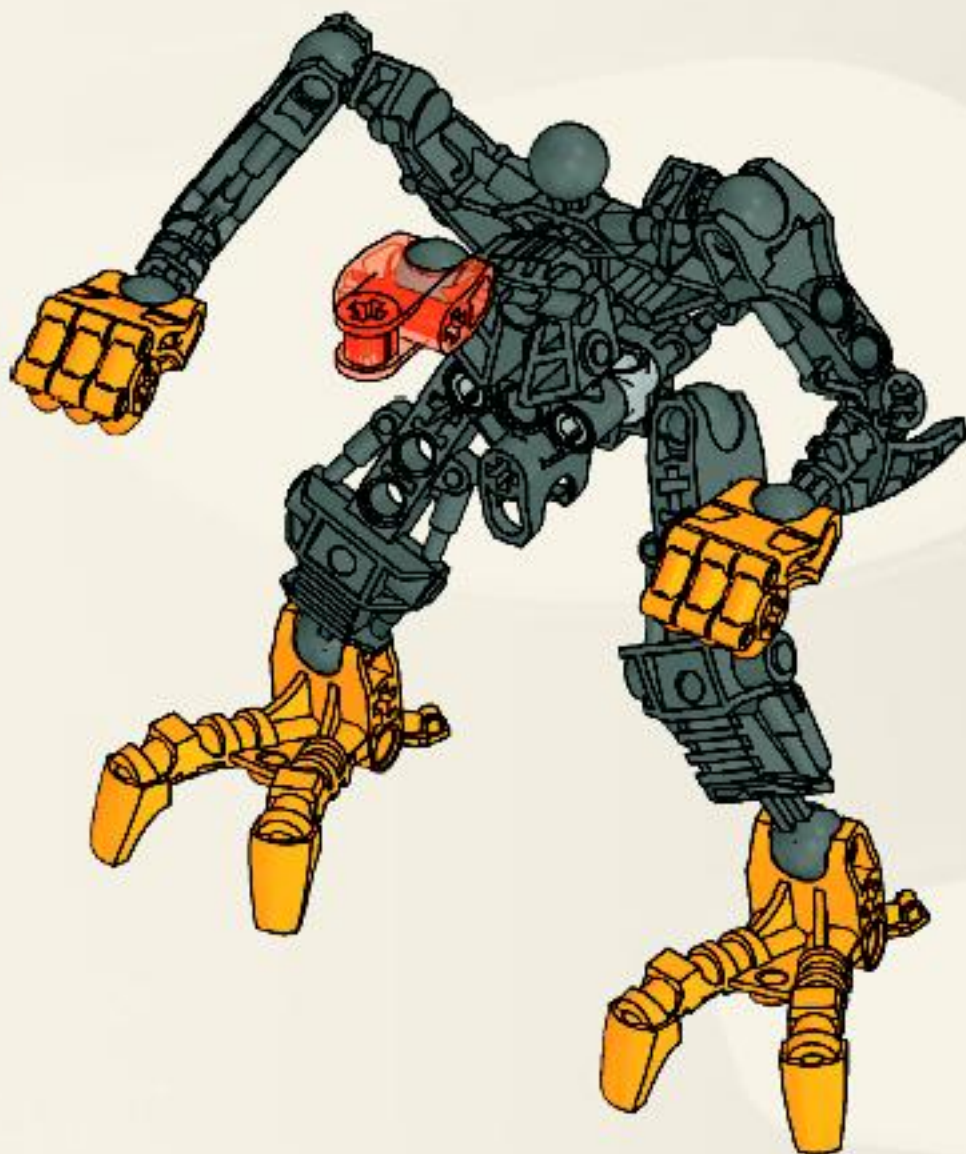


6

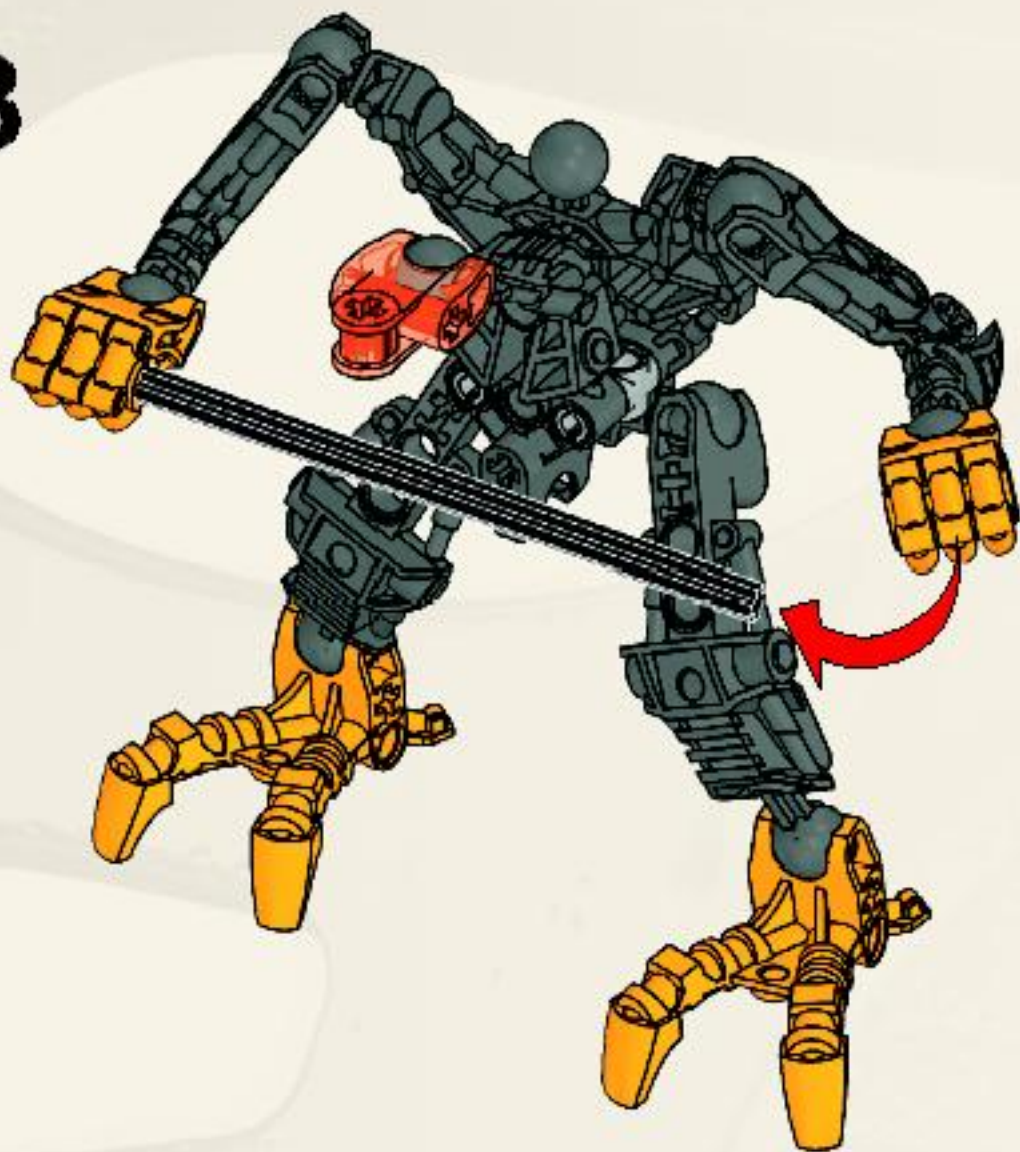




7

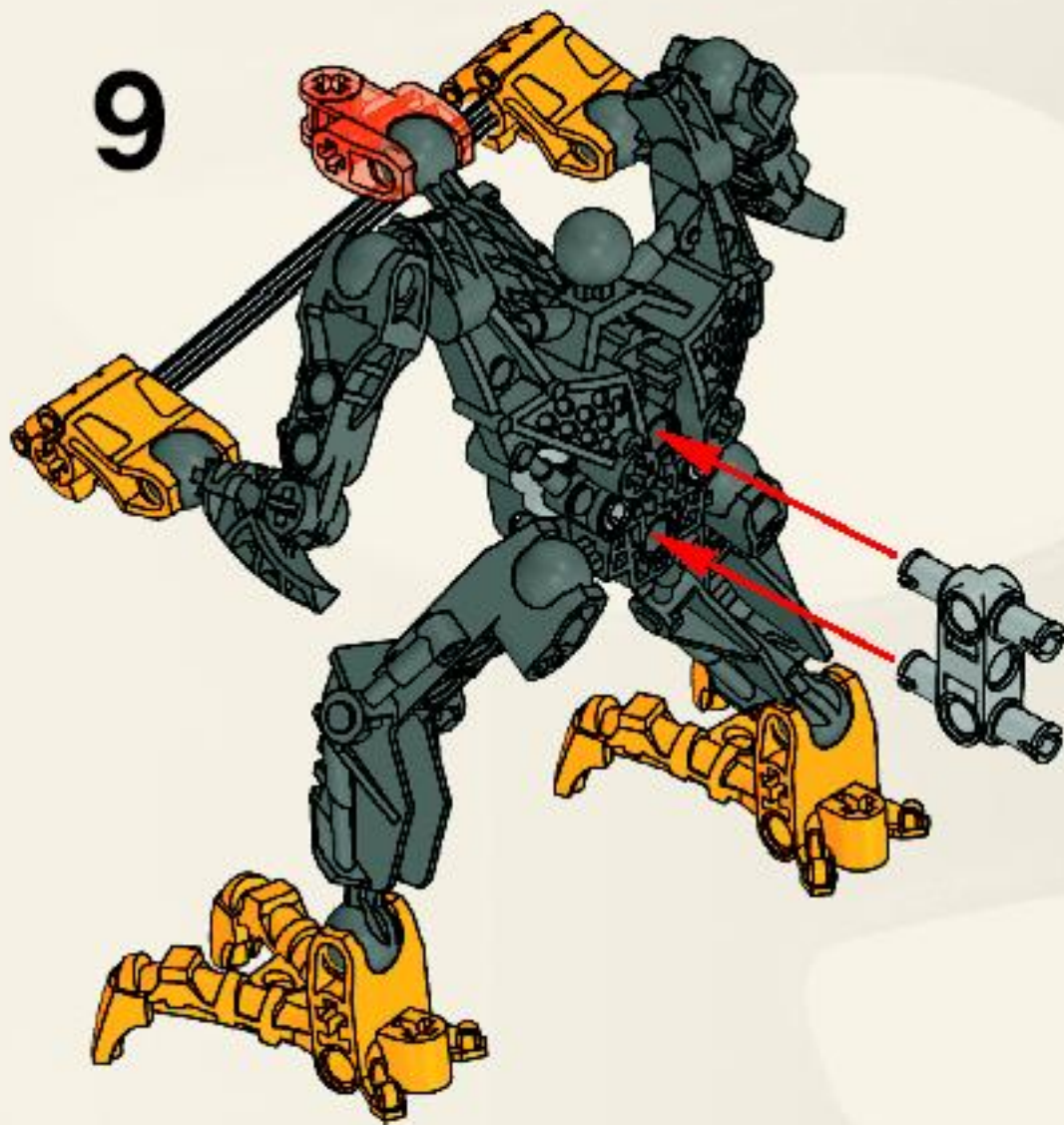


8





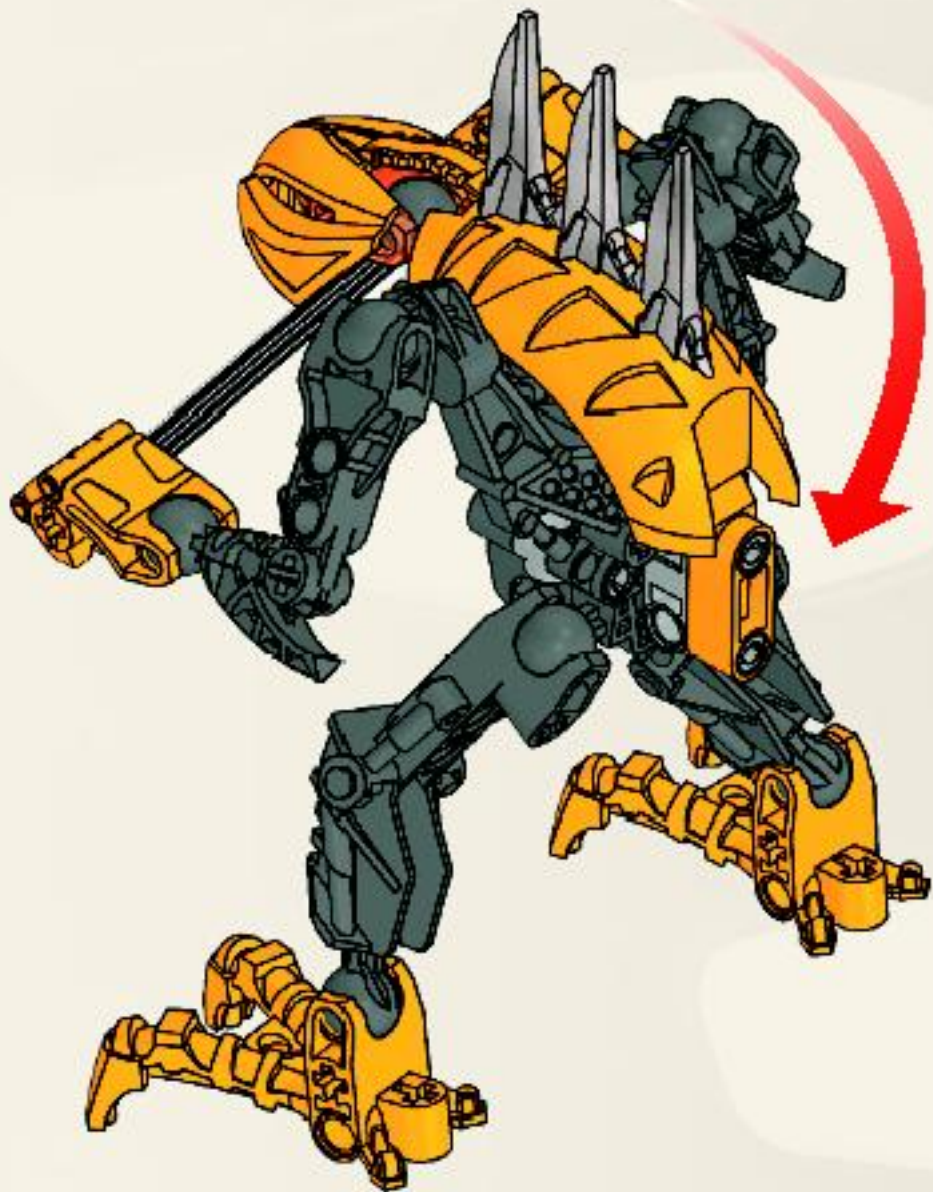
9



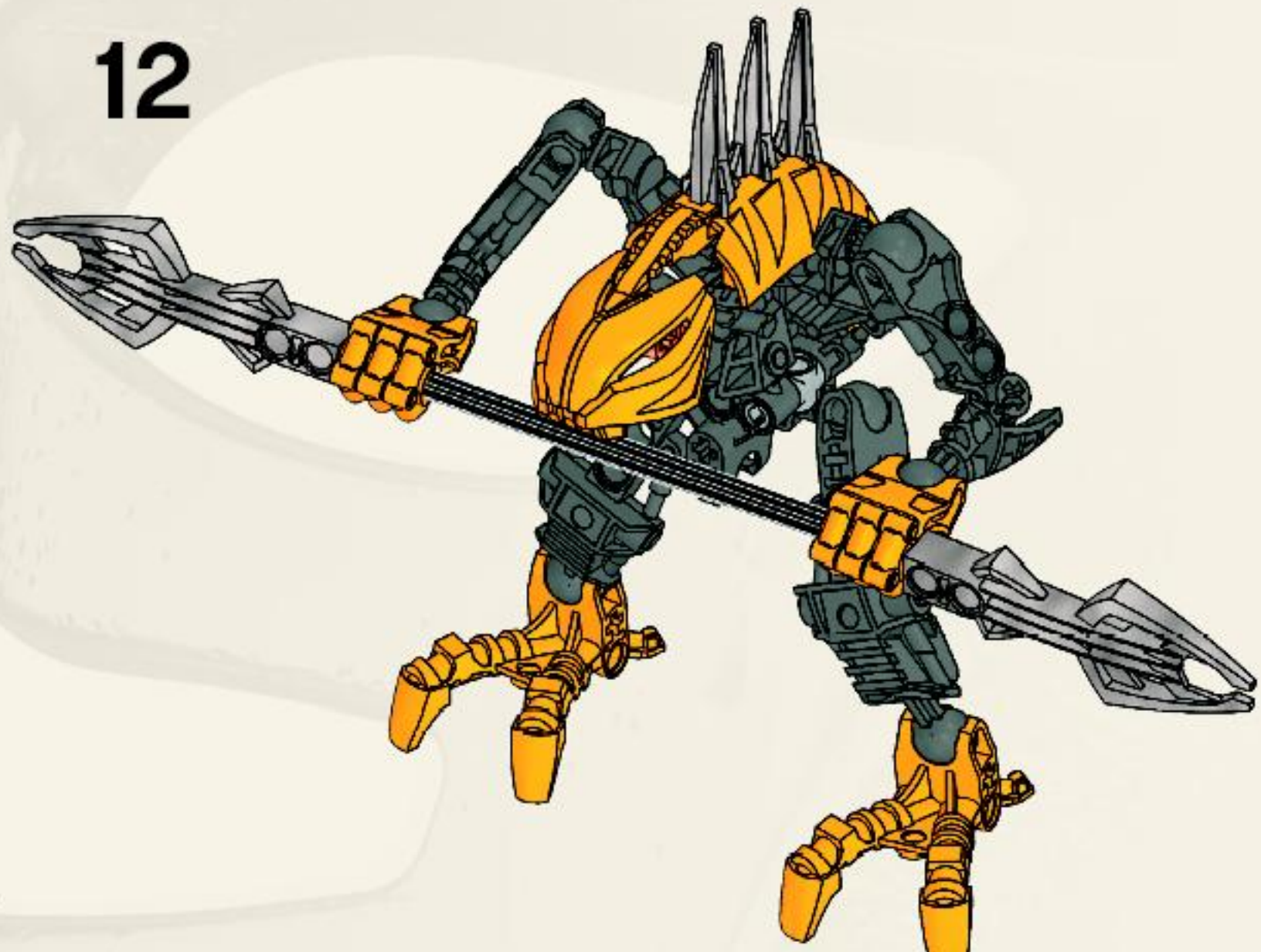
10



11



12





2x  
4565909



2x  
4520068



2x  
4539193



2x  
4565908



1x  
4565896



2x  
4565902



1x  
4565897



2x  
4225033



1x  
4567580



1x  
4569360



1x  
4516401



1x  
370826



Customer Service

Kundenservice

Service Consommateurs

Servicio Al Consumidor

[www.lego.com/service](http://www.lego.com/service) or dial





# WIN!



Go to [www.nielsen.com/LEGO](http://www.nielsen.com/LEGO)  
to fill out a survey for a chance  
to win a cool LEGO® Product.  
No purchase necessary.  
Open to all residents where not prohibited.



## [www.nielsen.com/LEGO](http://www.nielsen.com/LEGO)

### GEWINNE!

Nimm an der Umfrage auf [www.nielsen.com/LEGO](http://www.nielsen.com/LEGO) teil und hab die Chance ein cooles LEGO Produkt zu gewinnen! Die Teilnahme am Gewinnspiel führt zu keinerlei Kaufverpflichtungen. Teilnahme in allen nicht ausgeschlossenen Ländern möglich.

### WIN!

Ga naar [www.nielsen.com/LEGO](http://www.nielsen.com/LEGO), vul een enquêteformulier in en maak kans op een cool LEGO® product. Geen aankoopverplichting. Iedereen mag deelnemen, uitgezonderd ingezetenden van landen waar een enquêteverbod geldt.

### GAGNE!

Visite [www.nielsen.com/LEGO](http://www.nielsen.com/LEGO) pour répondre à un questionnaire et avoir une chance de gagner un produit LEGO® très cool! Aucune obligation d'achat. Ouvert à tous les résidents des pays autorisés.

### 当てよう!

[www.nielsen.com/LEGO](http://www.nielsen.com/LEGO) にアクセスして、アンケートにご記入ください。当選者にはレゴ製品を差し上げます。お問い合わせ先は弊社。中止されていない限り、すべての詳細にご利用ください。

CARTOON NETWORK, the logo BEN 10 ALIEN FORCE and all related characters and elements are trademarks of and © 2010 Cartoon Network. LEGO and the LEGO logo are trademarks of the LEGO Group. ©2010 The LEGO Group. ©2010 LucasFilm Ltd. & TM. All rights reserved. Used under authorization.